

Uncertain Worlds



Migration.

EVERY YEAR, MILLIONS OF PEOPLE MIGRATE LOCALLY OR ACROSS BORDERS.



MANY MIGRATION POLICIES FOCUS ON STABILITY, REGULARITY AND CONTROL.



BUT THE EXPERIENCES OF MIGRANTS THEMSELVES ARE MORE UNCERTAIN, UNPREDICTABLE AND VARIABLE.



MIGRATION FLOWS ARE COMPLEX AND MULTI-DIRECTIONAL—THEY DON'T JUST GO ONE WAY.

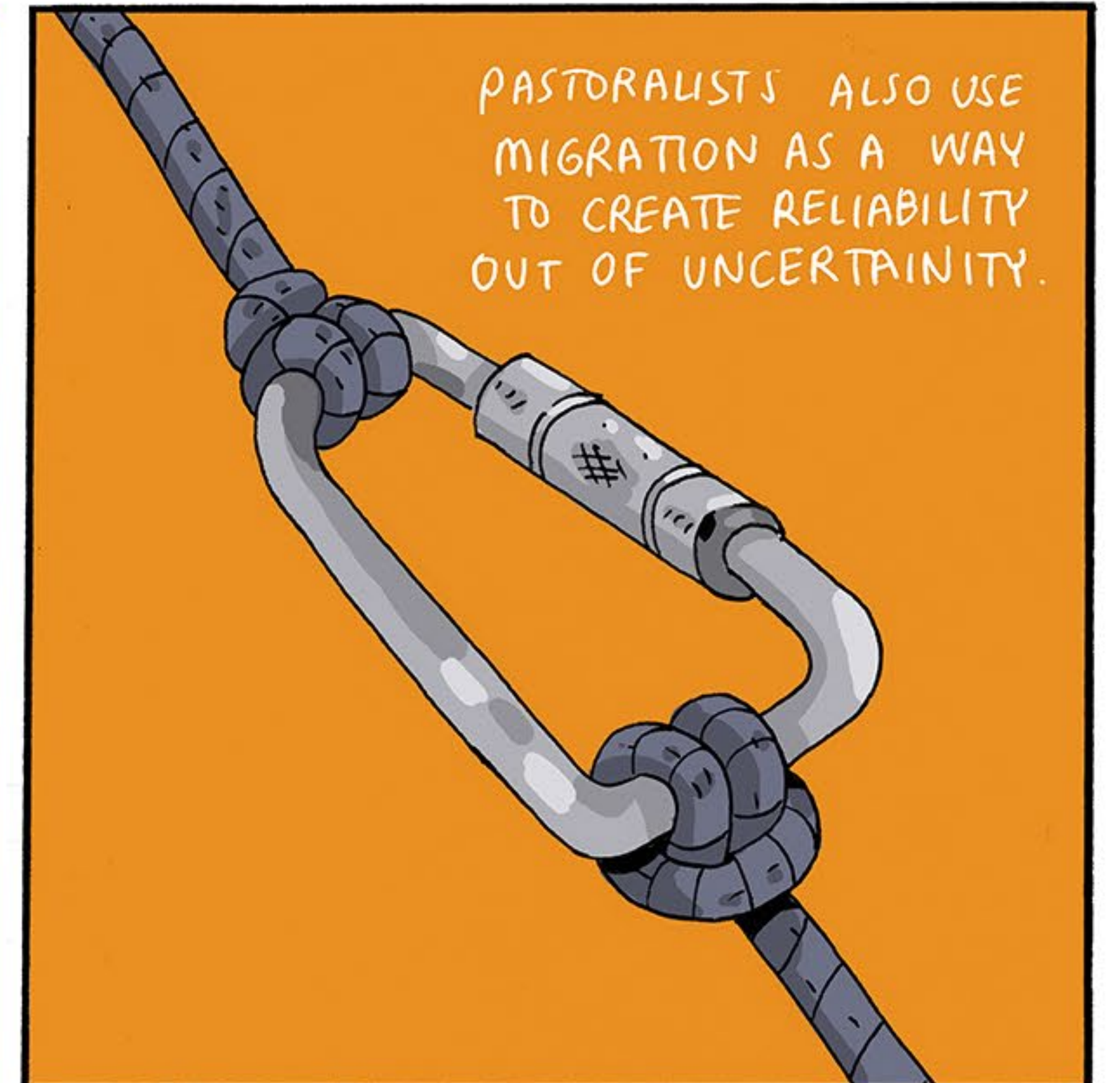
PEOPLE MIGRATE FOR LOTS OF REASONS, AND SIMPLE 'PUSH' AND 'PULL' FACTORS OFTEN DON'T APPLY.



FOCUSING ON MIGRATION AS A 'CRISIS' IGNORES ALL THE UNPREDICTABLE, EVERYDAY MOVEMENTS THAT PEOPLE MAKE.



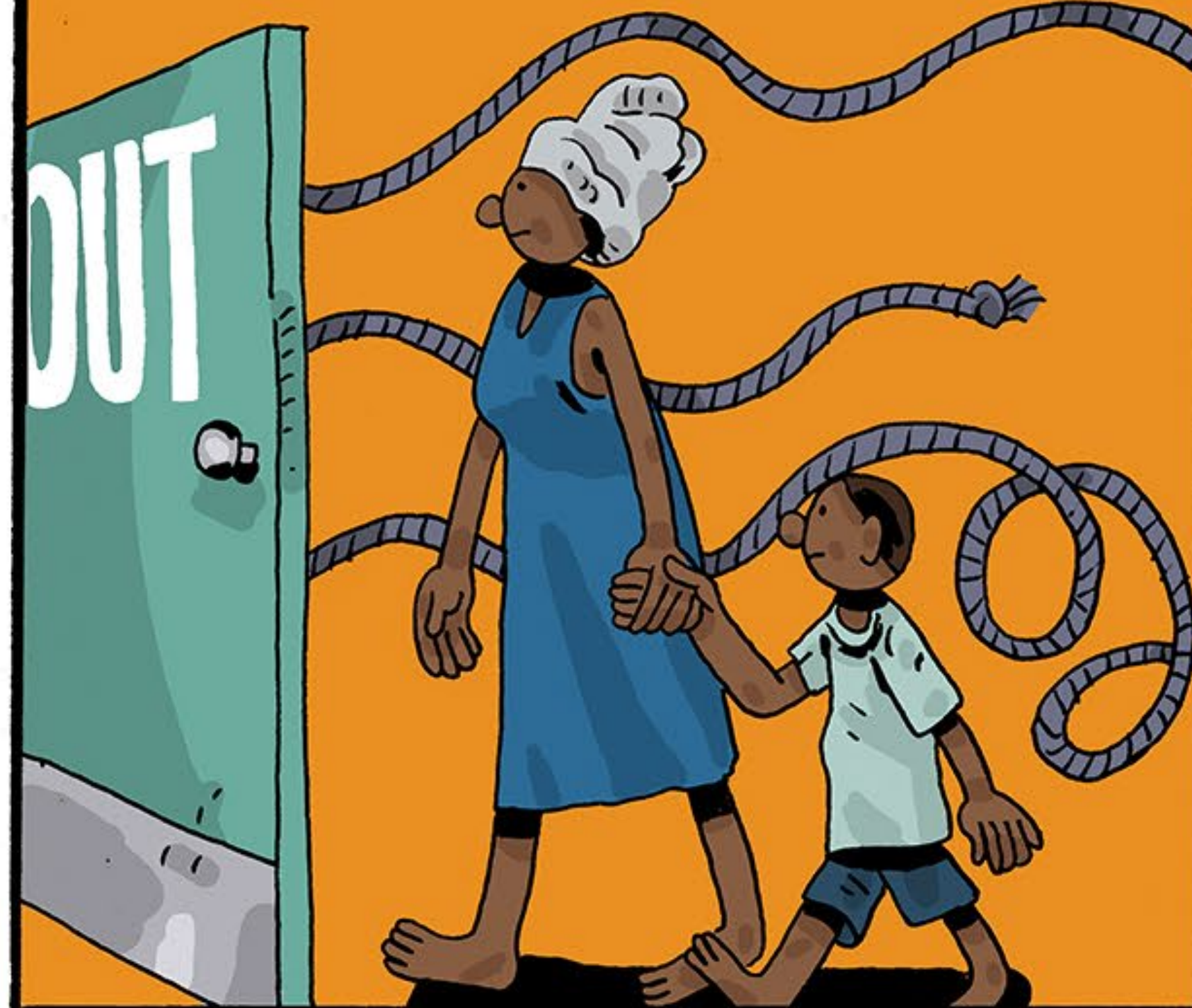
PASTORALISTS ALSO USE MIGRATION AS A WAY TO CREATE RELIABILITY OUT OF UNCERTAINTY.



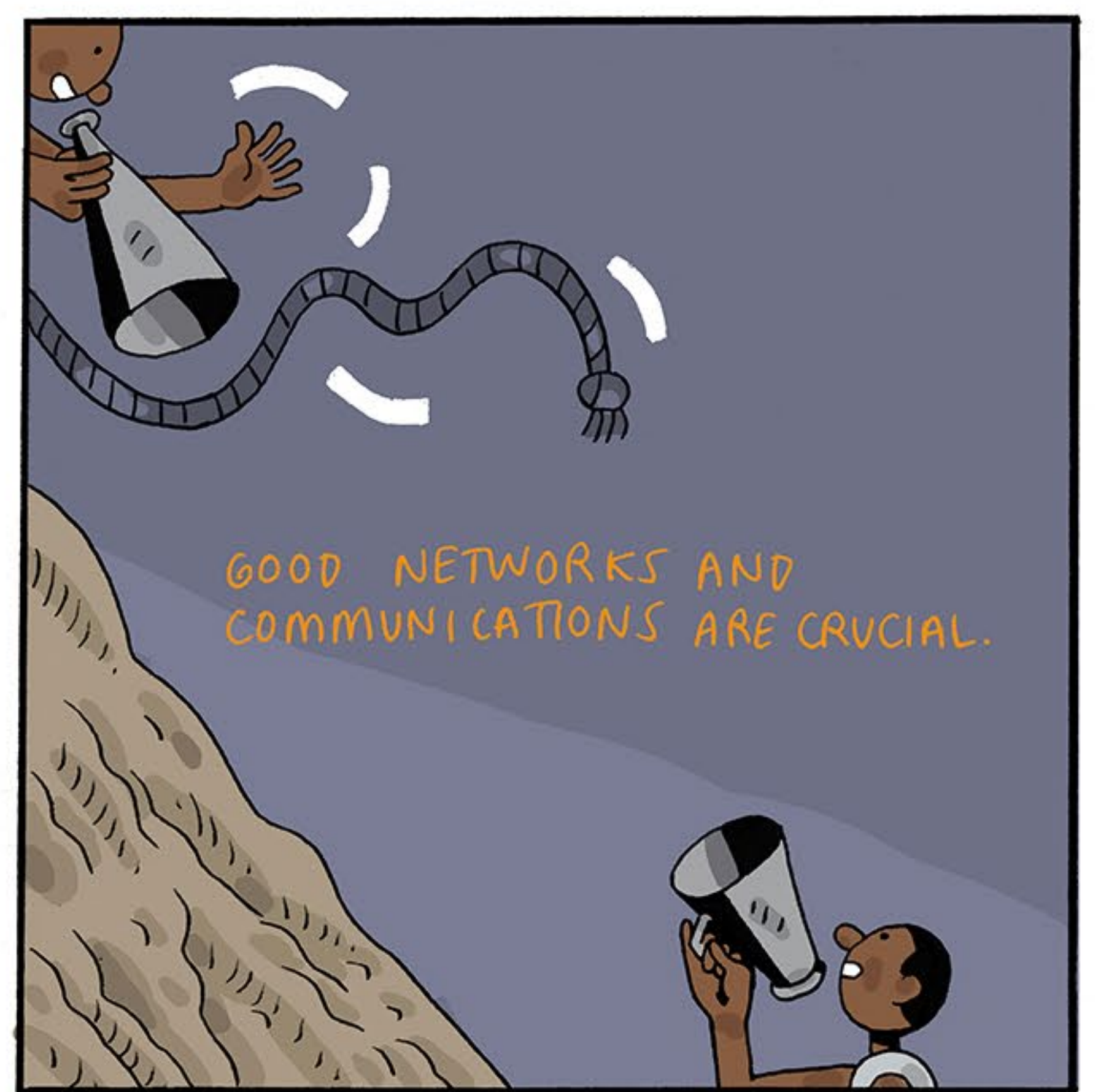
THEIR RHYTHMS AND ROUTINES CAN INVOLVE MULTIPLE STOPS AND PAUSES ...



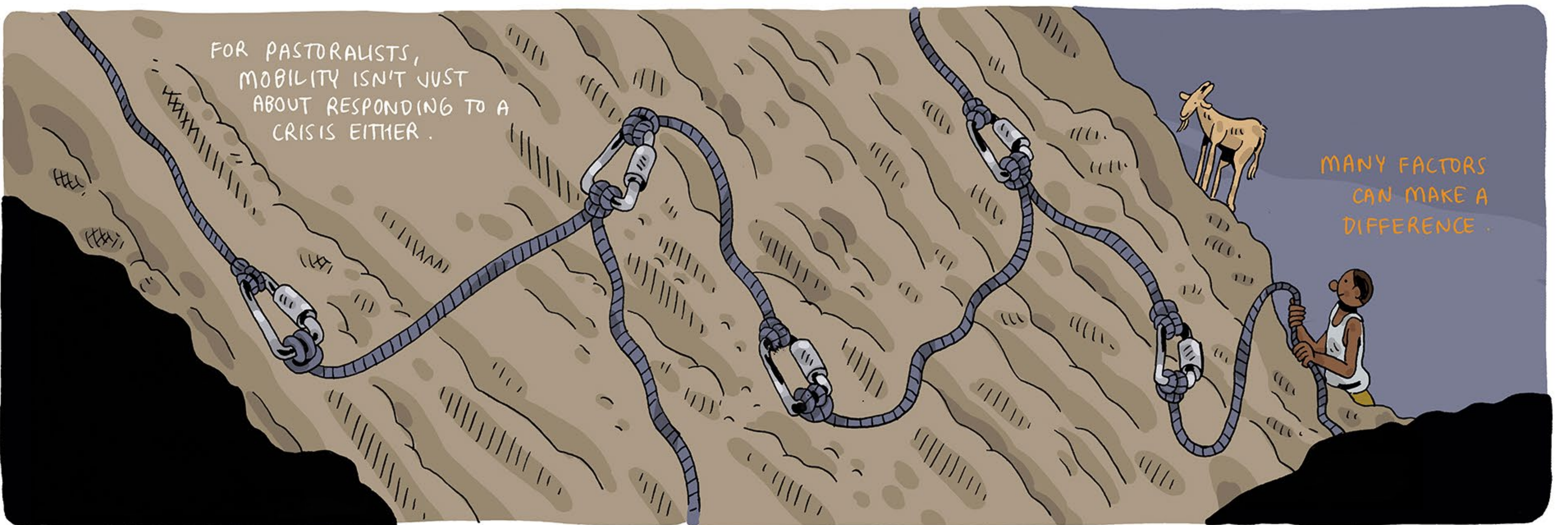
... LOOPS AND FLOWS



GOOD NETWORKS AND COMMUNICATIONS ARE CRUCIAL.



FOR PASTORALISTS, MOBILITY ISN'T JUST ABOUT RESPONDING TO A CRISIS EITHER.

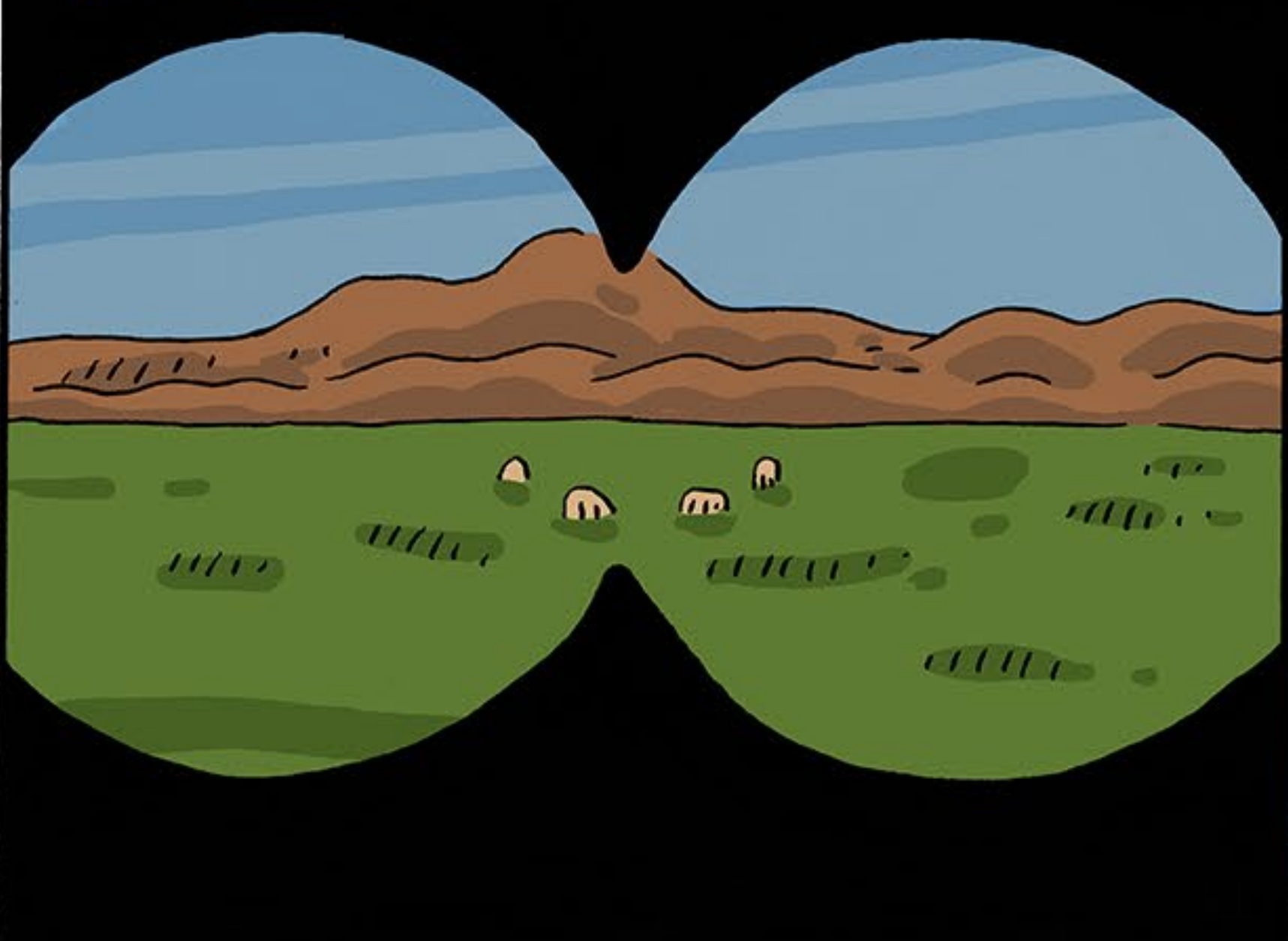


MANY FACTORS CAN MAKE A DIFFERENCE.

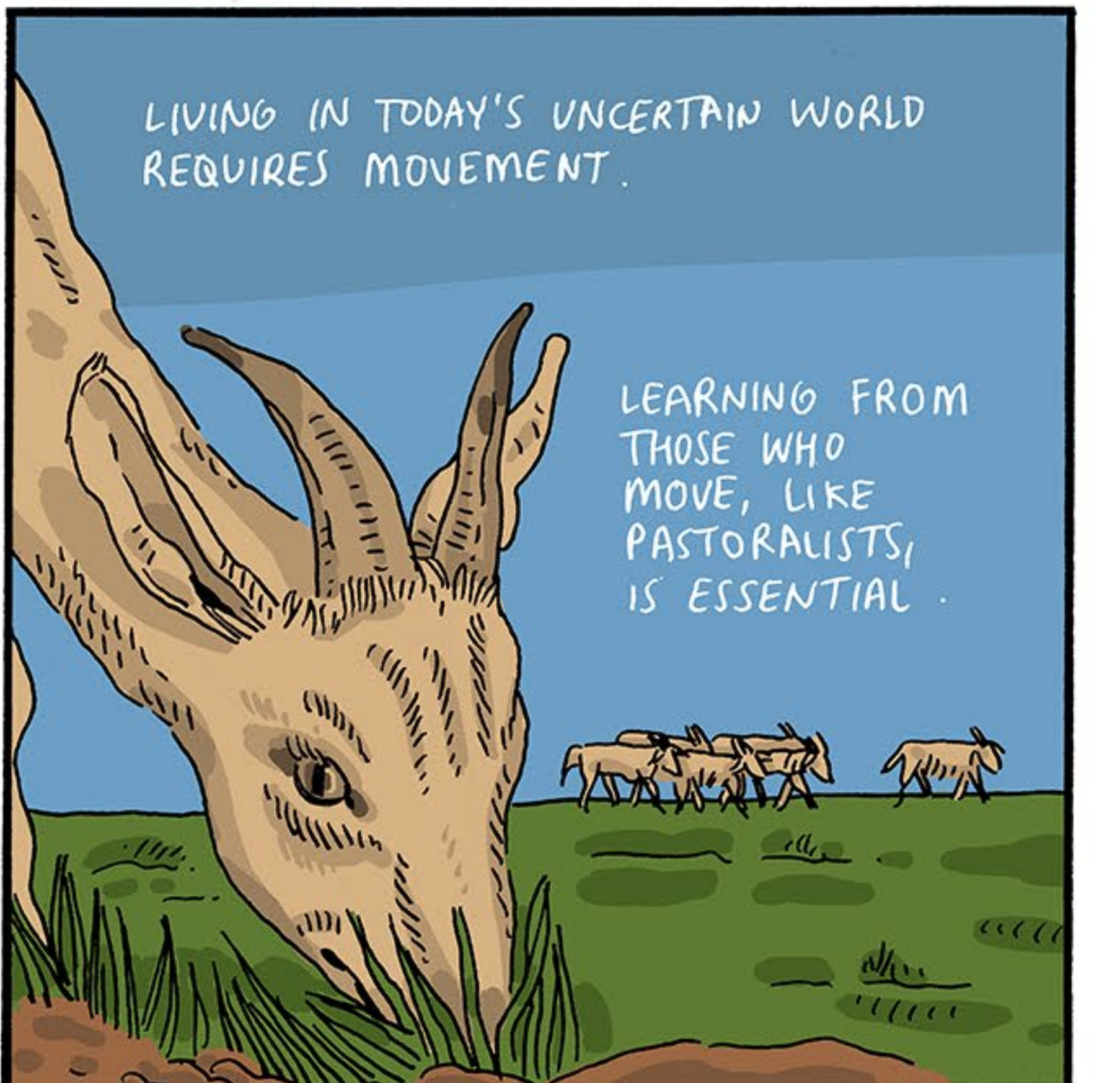
THEY MIGHT SEE AN OPPORTUNITY FOR BETTER GRAZING, OR HAVE A SEASONAL ROUTINE OF MOVEMENTS THAT CAN BE ADAPTED.



MIGRATION POLICIES MUST ACKNOWLEDGE THE REAL EXPERIENCES OF PEOPLE ON THE MOVE: VARIABLE AND COMPLEX, WITH MANY REASONS FOR MOVEMENT.



LIVING IN TODAY'S UNCERTAIN WORLD REQUIRES MOVEMENT.



LEARNING FROM THOSE WHO MOVE, LIKE PASTORALISTS, IS ESSENTIAL.