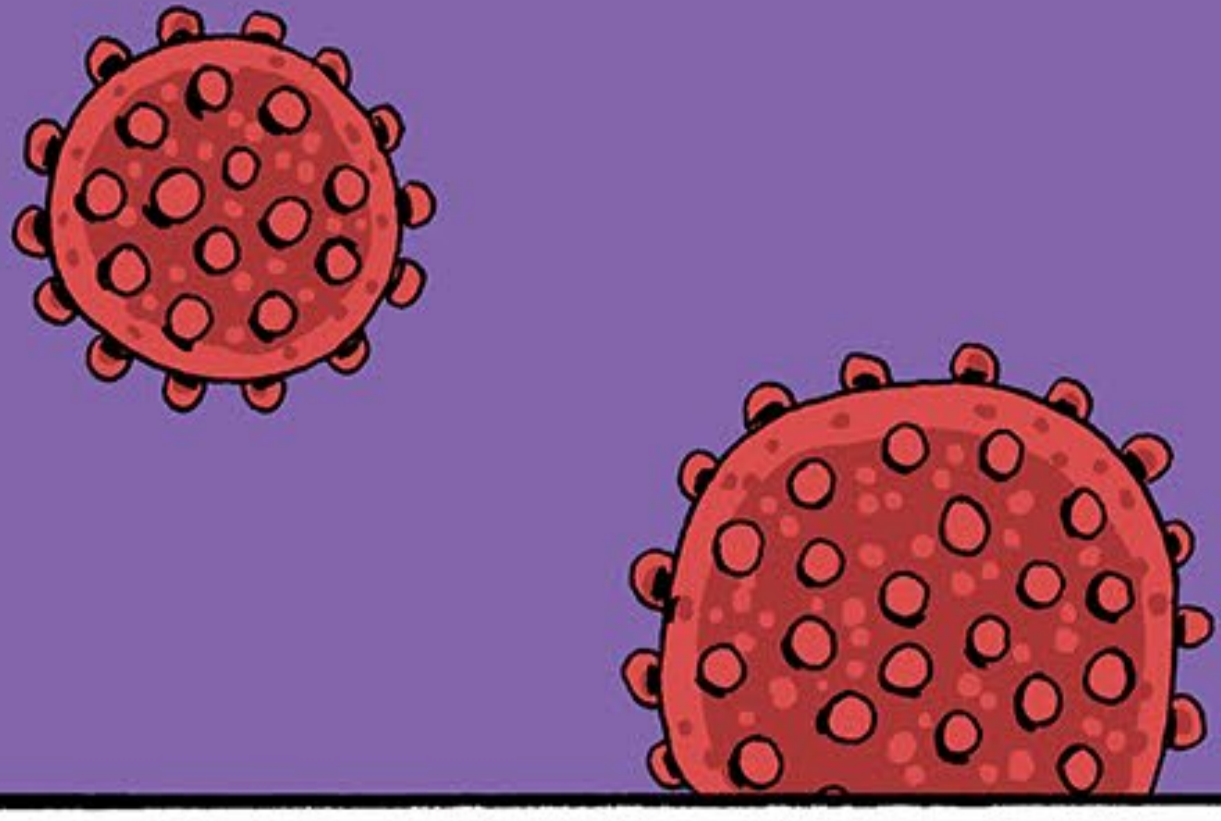
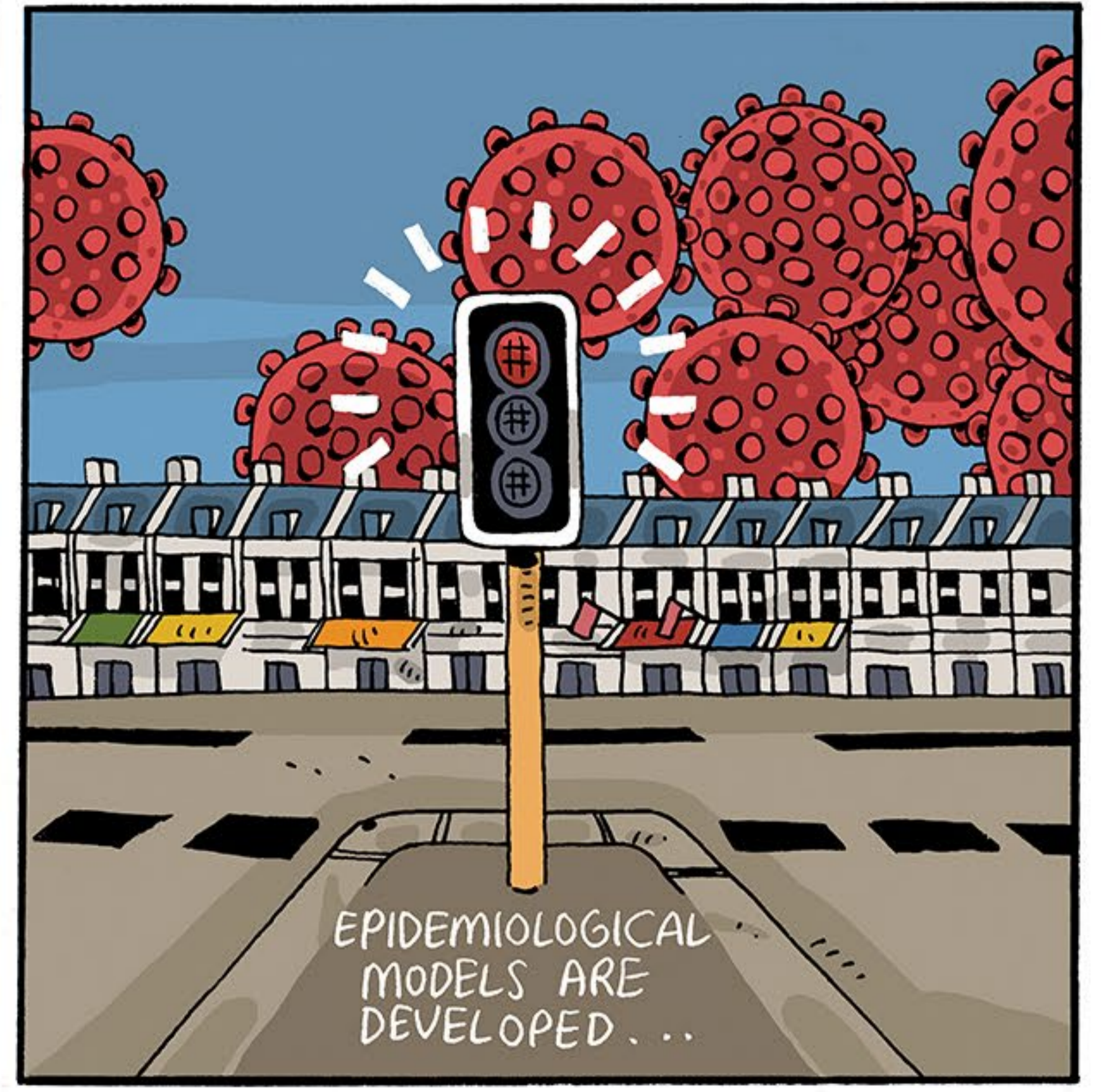
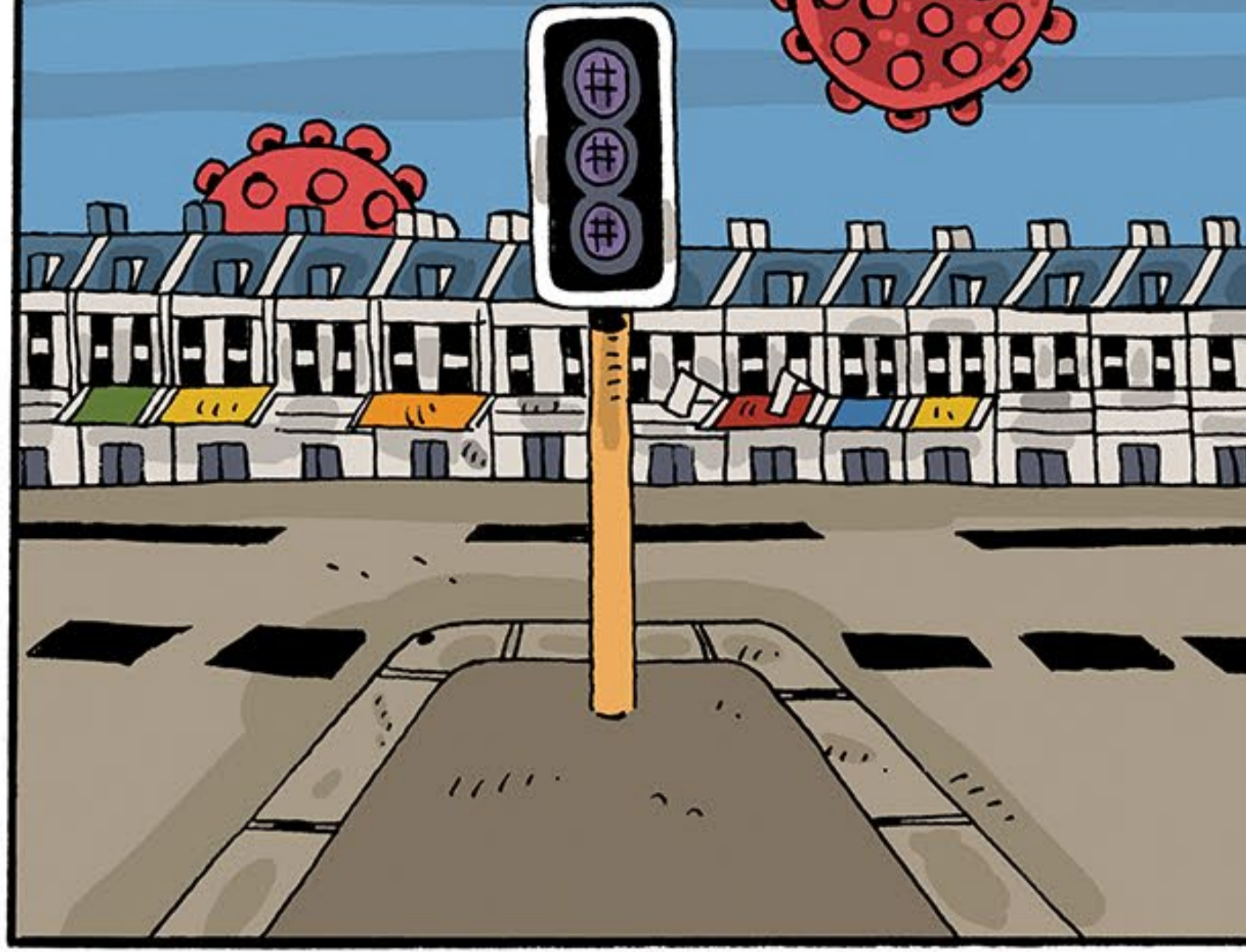


# Uncertain Worlds

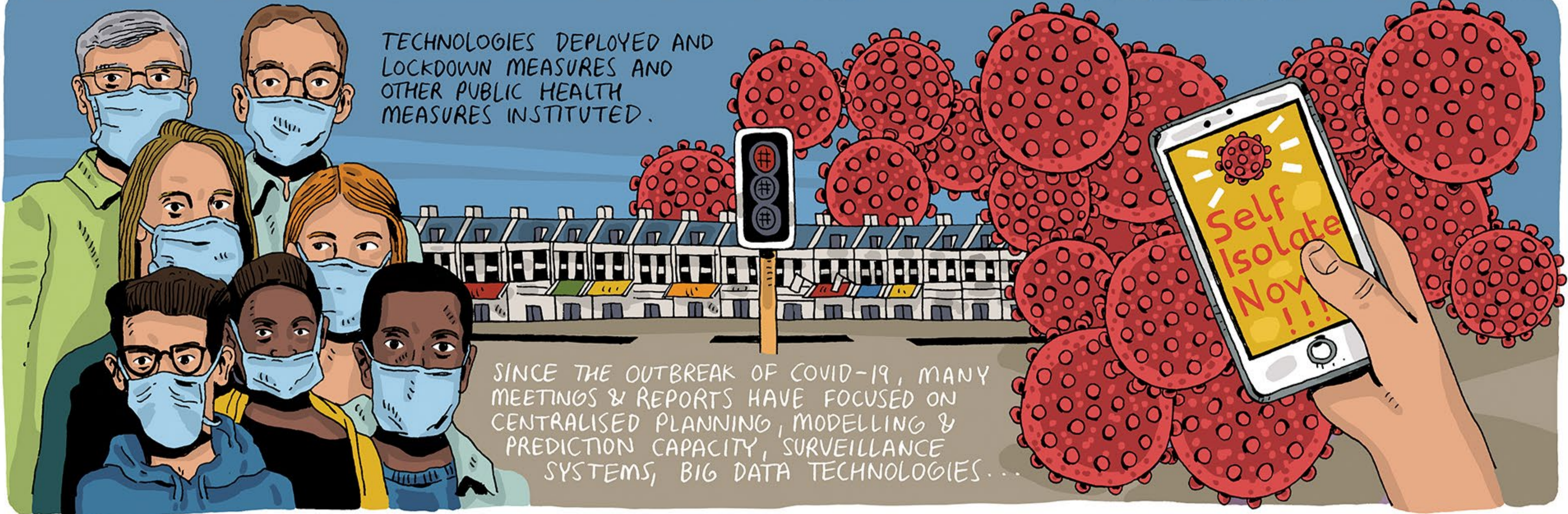
## Pandemics



WHEN DISEASE OUTBREAKS OCCUR, THE DOMINANT TENDENCY IS TO ATTEMPT TO MANAGE & CONTROL.

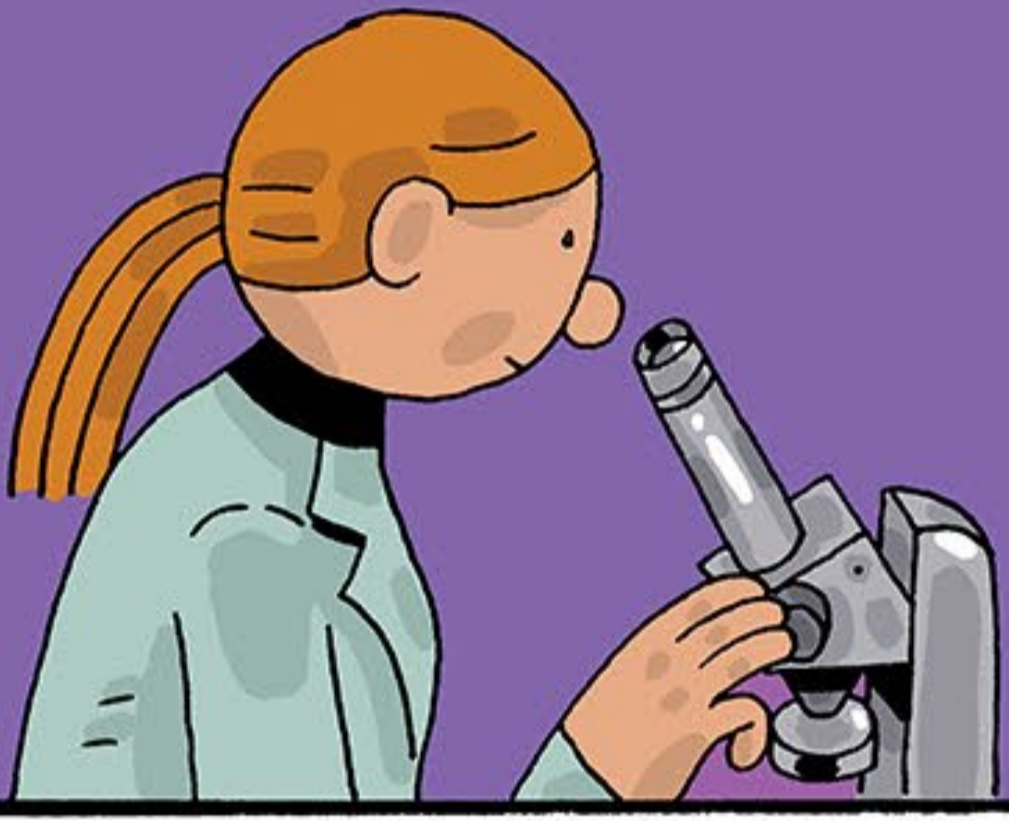


TECHNOLOGIES DEPLOYED AND LOCKDOWN MEASURES AND OTHER PUBLIC HEALTH MEASURES INSTITUTED.



SINCE THE OUTBREAK OF COVID-19, MANY MEETINGS & REPORTS HAVE FOCUSED ON CENTRALISED PLANNING, MODELLING & PREDICTION CAPACITY, SURVEILLANCE SYSTEMS, BIG DATA TECHNOLOGIES...

... RAPID RESPONSE TEAMS, DRUG & VACCINE RESEARCH & DEVELOPMENT, STOCKPILING & PURCHASE ARRANGEMENTS & HEALTH SYSTEM STRENGTHENING.



BUT IN MANY COUNTRIES, ARGUMENTS ABOUT POLITICS & STRATEGIC RESPONSES TO COVID-19 CONTINUE TO RAGE.



TO RESPOND MORE EFFECTIVELY, OTHER APPROACHES ARE ALSO NEEDED. THESE ARE SOMETIMES MISSING OR NEGLECTED IN PLANNING FOR OUTBREAKS.



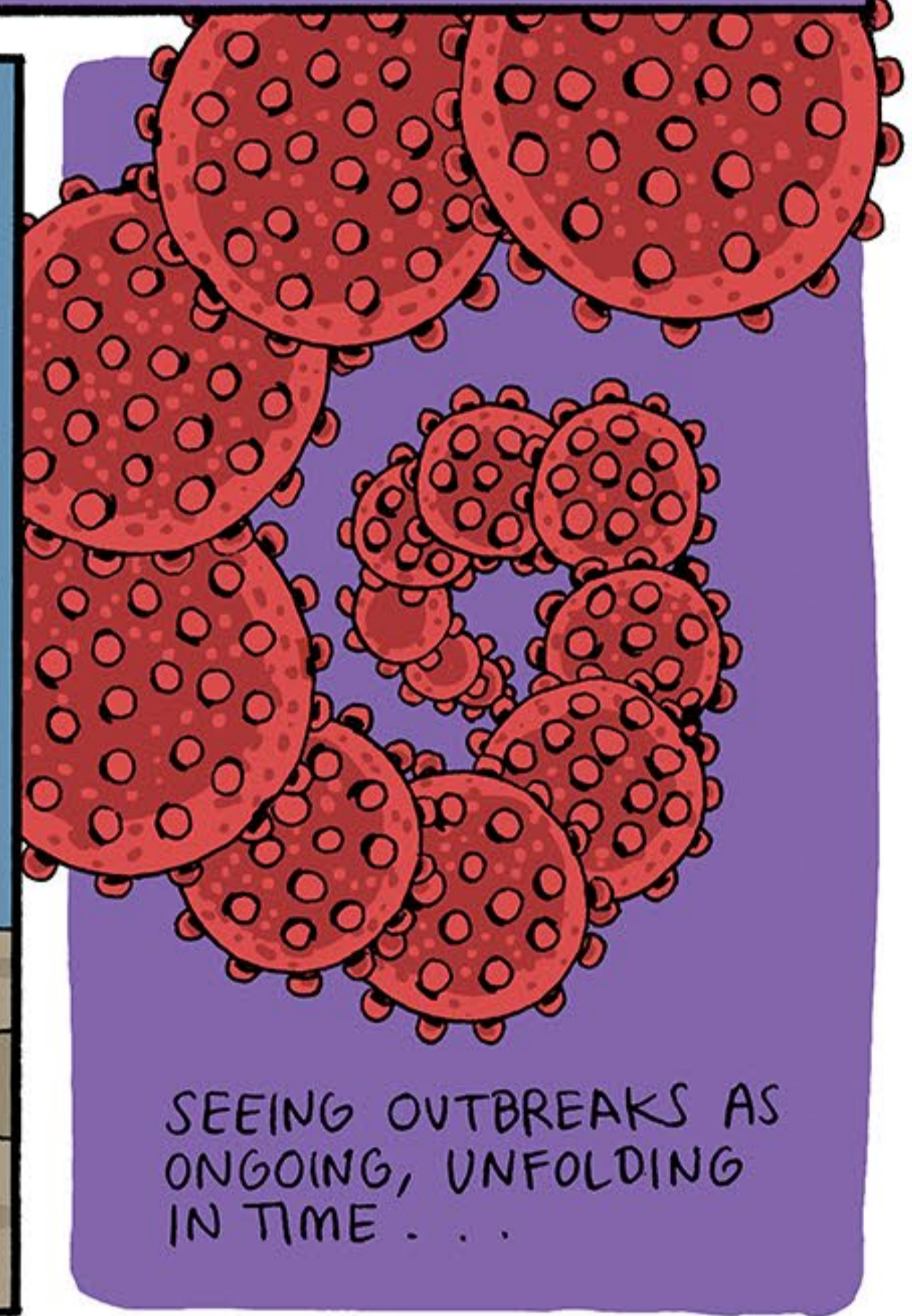
THE APPRECIATION OF MULTIPLE KNOWLEDGES, INCLUDING LOCAL, GROUNDED KNOWLEDGE OF DISEASE IN CONTEXTS.



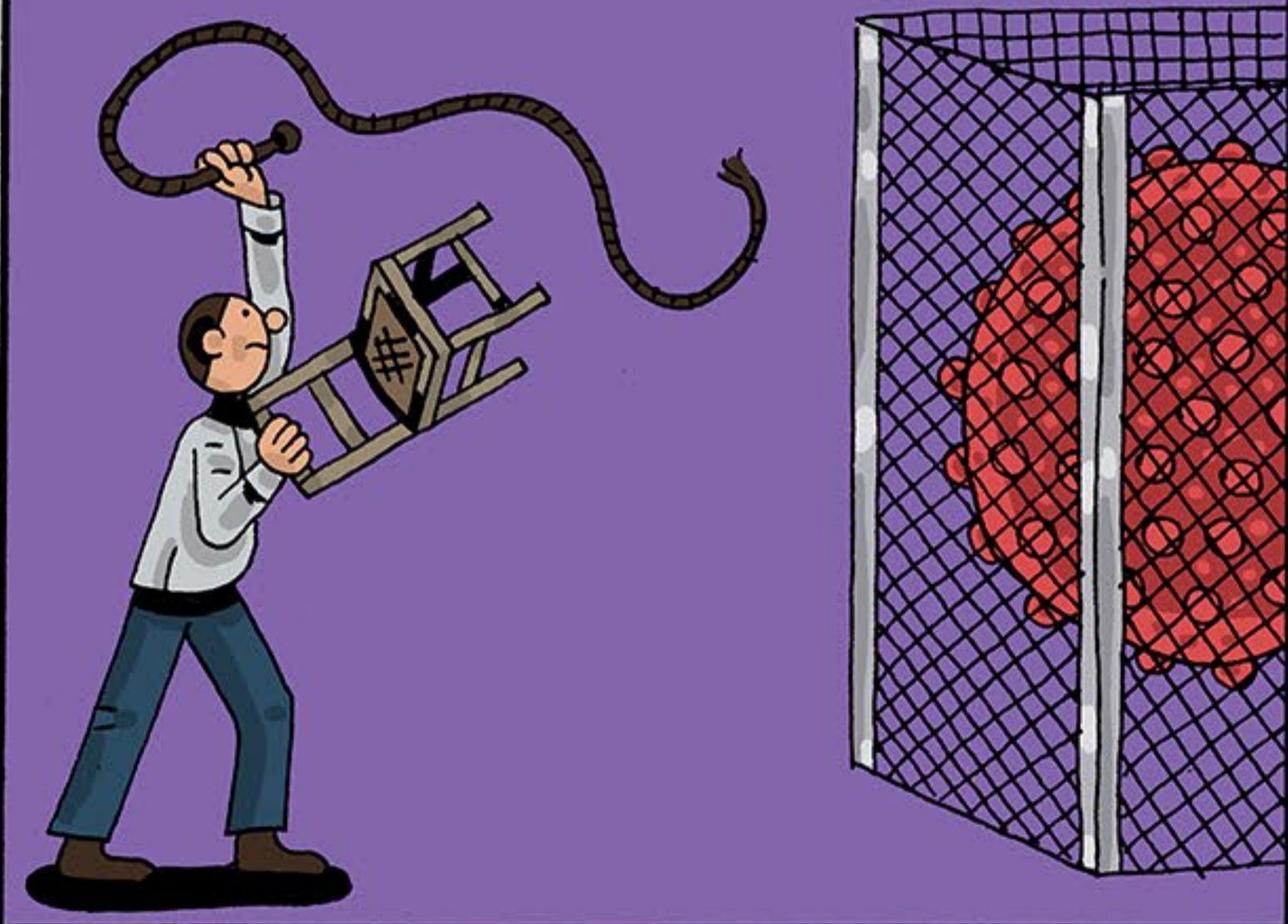
YES, MYTHS WILL CIRCULATE, BUT ALSO PEOPLE SHARE & BUILD UP KNOWLEDGE THAT'S SPECIFIC TO THEIR CIRCUMSTANCES, MAKING USE OF 'RELIABILITY PROFESSIONALS' ON THE FRONTLINE OF REAL-TIME DISEASE RESPONSES.



LEARNING FROM THOSE WHO KNOW MOST ABOUT PEOPLE-DISEASE INTERACTIONS...



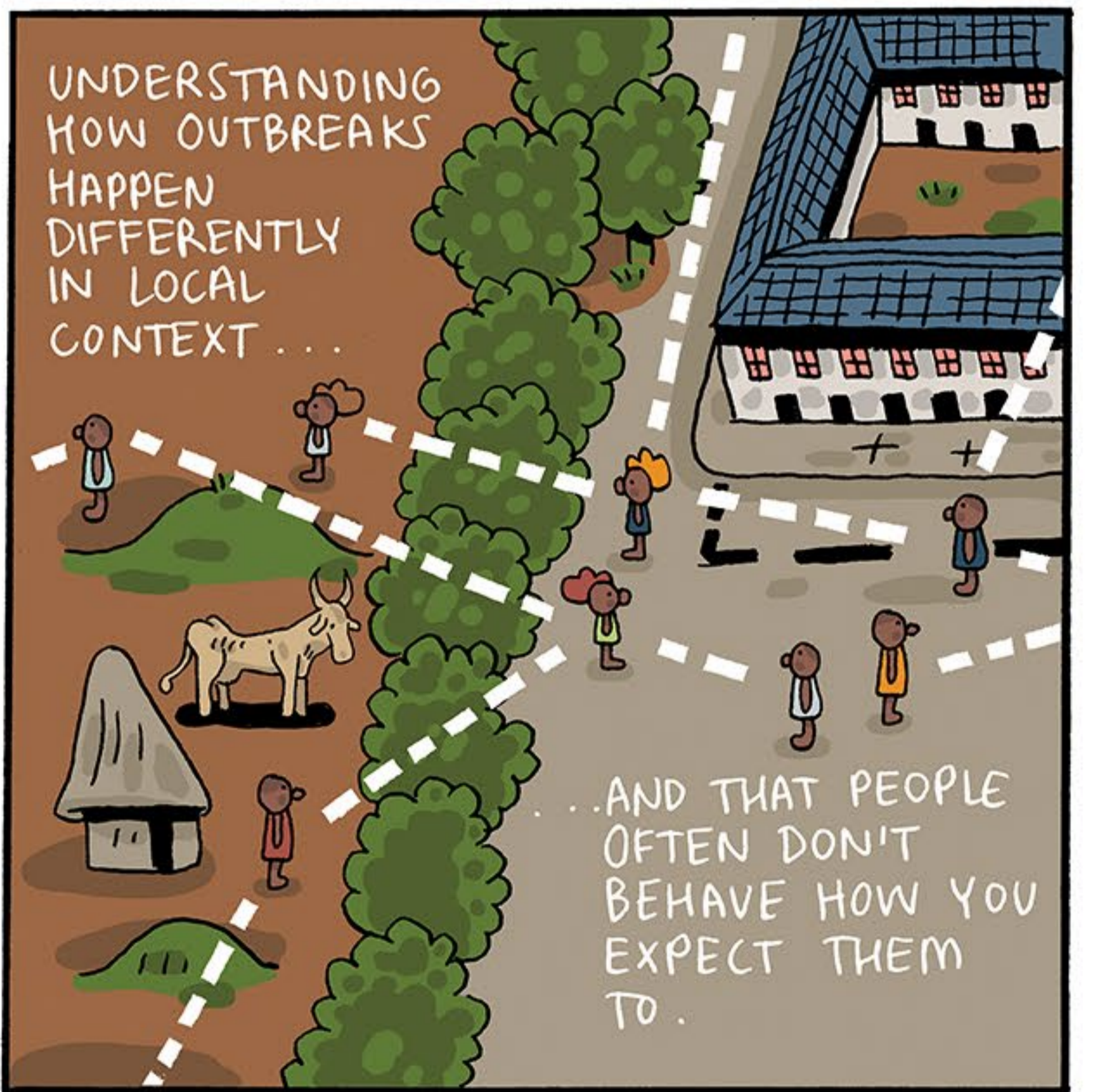
... RATHER THAN AS SPECIFIED EVENTS THAT CAN BE CONTROLLED.



EMBRACING UNCERTAINTIES— REALISING THAT PROBABILITIES CAN'T ALWAYS BE CALCULATED.



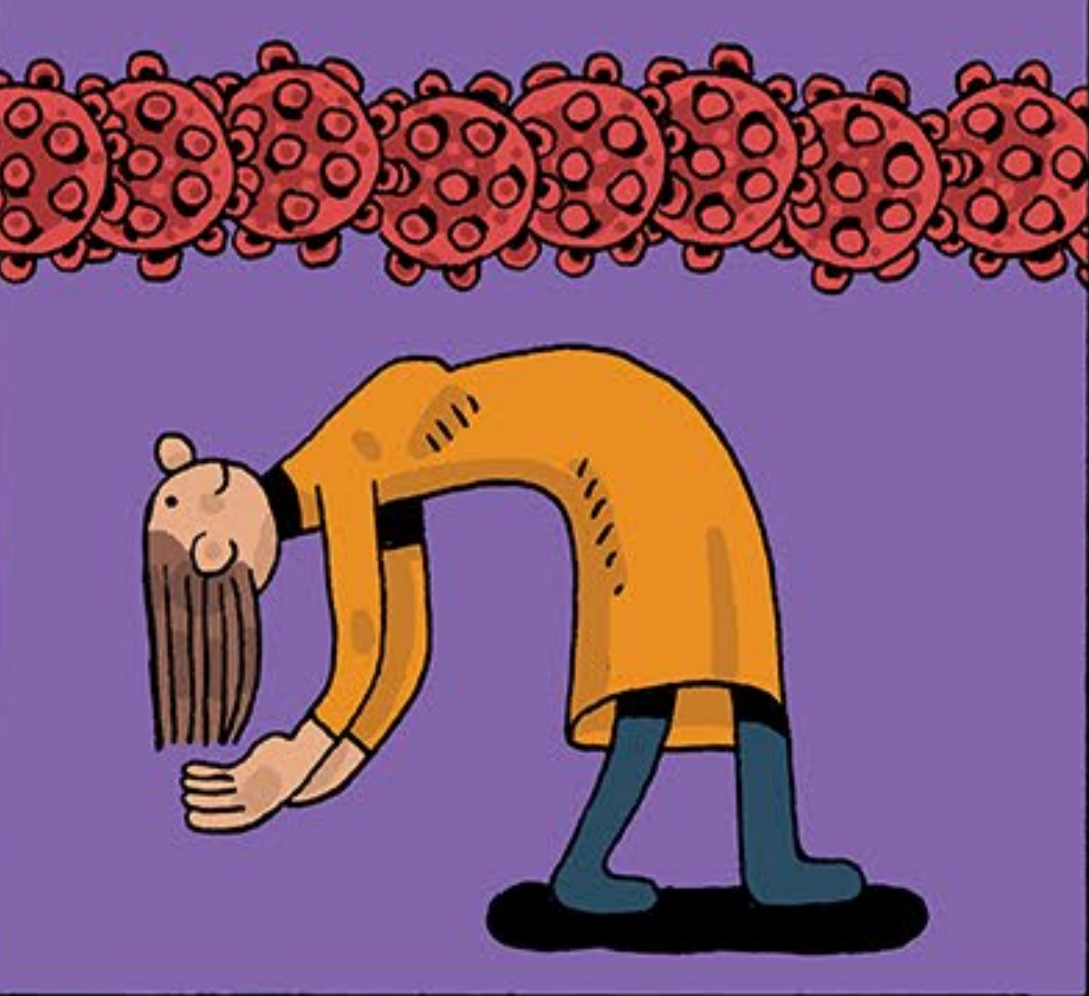
UNDERSTANDING HOW OUTBREAKS HAPPEN DIFFERENTLY IN LOCAL CONTEXT...



UNDERSTANDING HOW DISEASES INTERACT WITH OTHER VULNERABILITIES, HOW DIFFERENT PEOPLE & CULTURES RESPOND TO DISEASE, & HOW TRUST AFFECTS INTERACTIONS WITH HEALTHCARE WORKERS & GOVERNMENTS.



ADAPTING FLEXIBLY OVER SPACE & TIME.



THE LONG-TERM IMPACTS OF DISEASES LIKE COVID-19 ON SOCIETIES & PEOPLE'S BODIES ARE NOT FULLY KNOWN.

