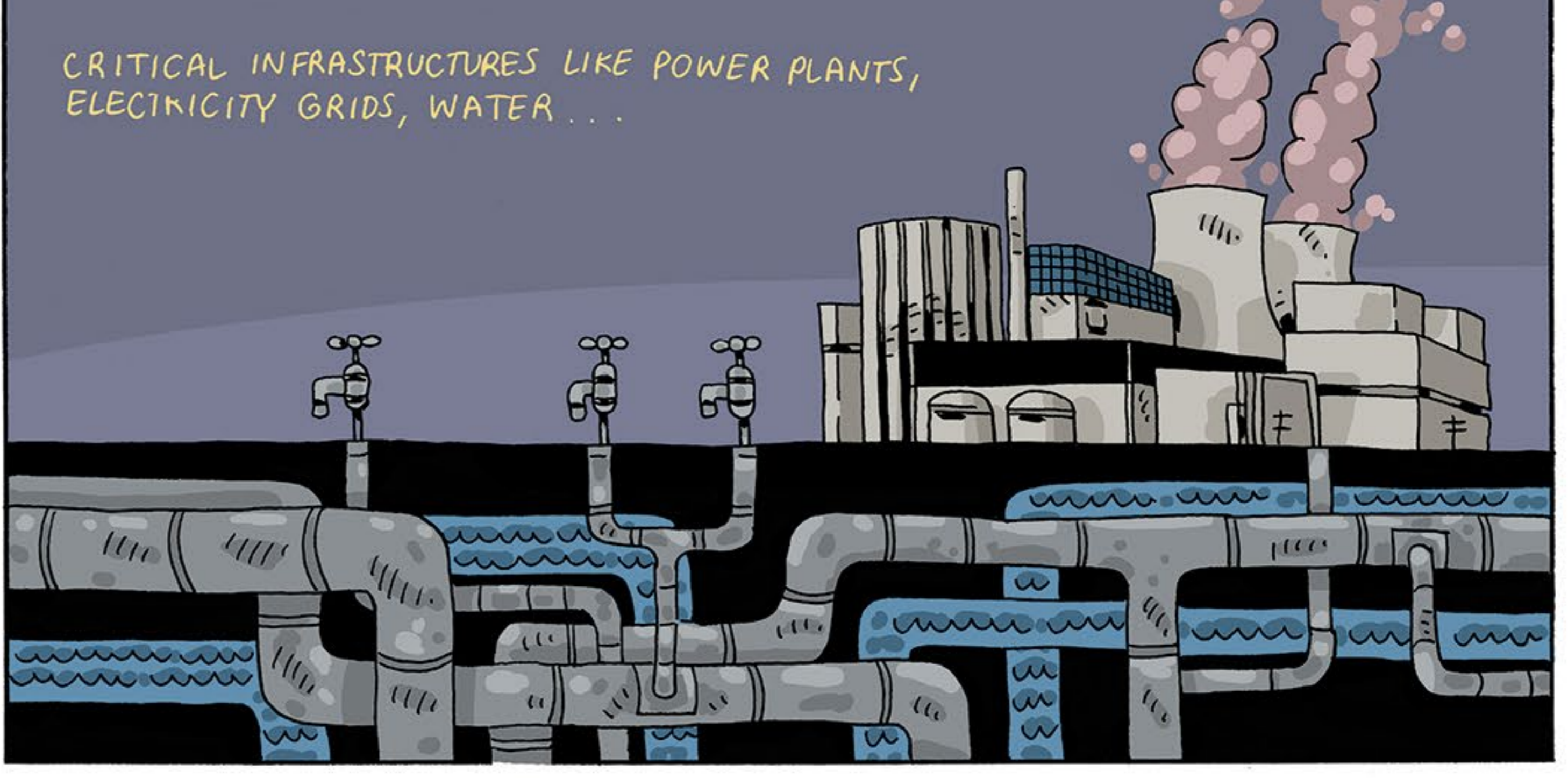


Uncertain Worlds

High
Reliability
Knowledge
Networks.



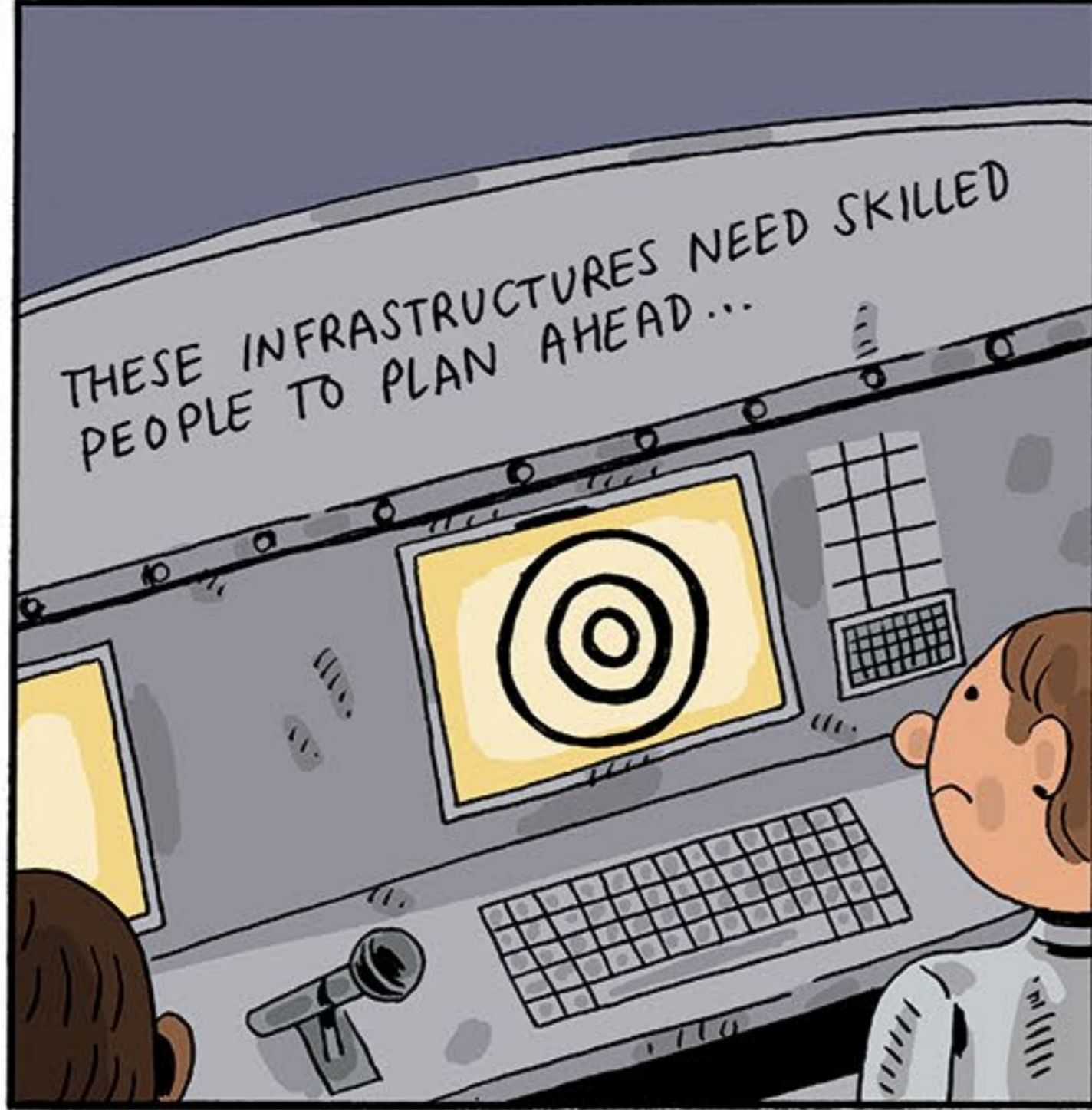
CRITICAL INFRASTRUCTURES LIKE POWER PLANTS,
ELECTRICITY GRIDS, WATER...



AND AIR TRAFFIC
CONTROL NEED TO BE
HIGHLY RELIABLE.



THESE INFRASTRUCTURES NEED SKILLED
PEOPLE TO PLAN AHEAD...



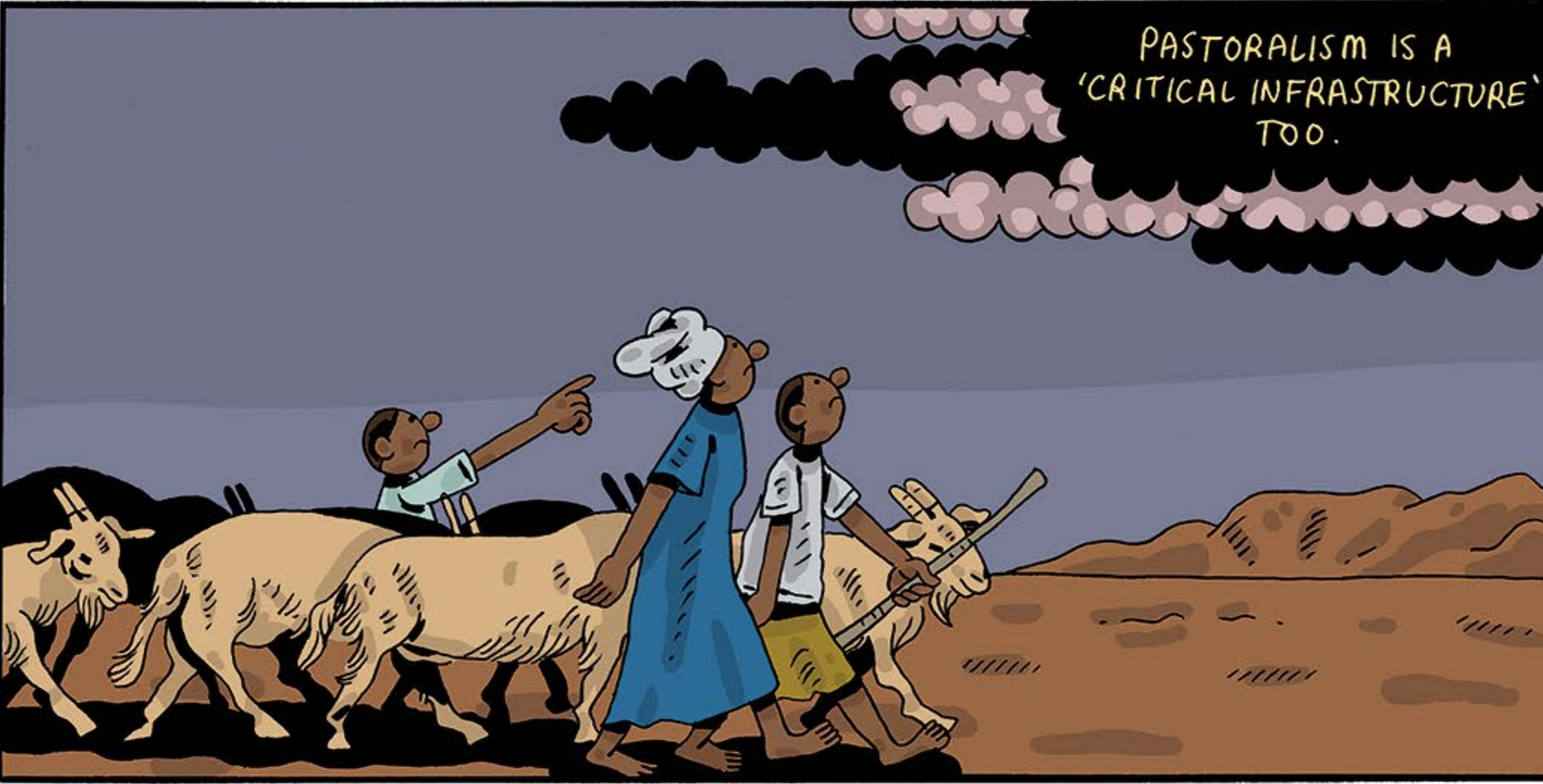
SHARE KNOWLEDGE...



AND IMPROVISE WHEN
THINGS GO WRONG.



PASTORALISM IS A
'CRITICAL INFRASTRUCTURE'
TOO.

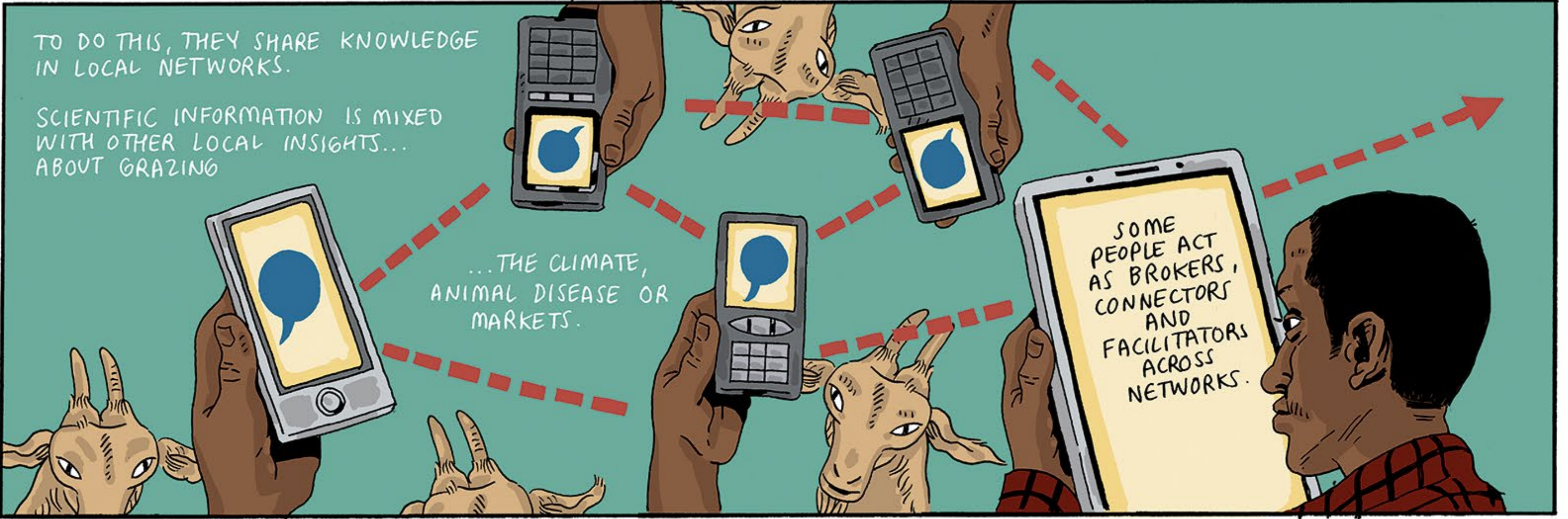


PASTORALISTS ARE EXPERTS AT GETTING
RELIABLE PRODUCE OUT OF VARIABLE
CONDITIONS.



TO DO THIS, THEY SHARE KNOWLEDGE
IN LOCAL NETWORKS.

SCIENTIFIC INFORMATION IS MIXED
WITH OTHER LOCAL INSIGHTS...
ABOUT GRAZING



...THE CLIMATE,
ANIMAL DISEASE OR
MARKETS.

SOME
PEOPLE ACT
AS BROKERS,
CONNECTORS
AND
FACILITATORS
ACROSS
NETWORKS.

THEY ARE 'HIGH RELIABILITY PROFESSIONALS'! WHEN DEALING WITH A DISEASE
OUTBREAK, THEY HELP TO CONNECT NETWORKS OF LOCAL PASTORALISTS,
DEVELOPMENT AGENCIES AND GOVERNMENT OFFICIALS.



TO BE EFFECTIVE, THEY NEED A GOOD
REPUTATION, CHARISMA AND PERSONAL
CONNECTIONS.



RATHER THAN EXPECTING THINGS TO
WORK THROUGH TOP-DOWN
KNOWLEDGE TRANSFER...



... LOCAL KNOWLEDGE NETWORKS
ARE VITAL FOR DEVELOPMENT.



THIS MEANS RECOGNISING HOW KNOWLEDGE
IS EXCHANGED THROUGH RELATIONSHIPS IN
NETWORKS AND THE VITAL ROLES PLAYED
BY 'HIGH RELIABILITY PROFESSIONALS'.

